

KlickFast mount installation for body cameras

This guide describes how to attach a KlickFast mount to an Axon Body 3 or later camera.

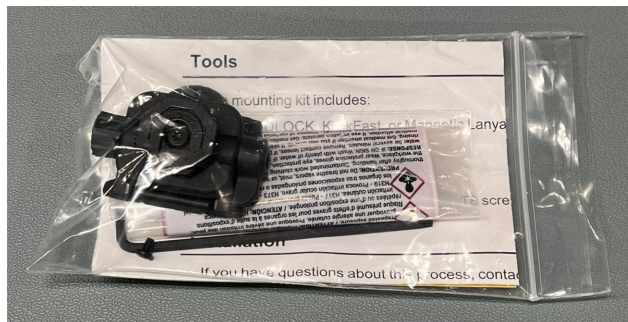
For a complete discussion of your camera, see the Axon product page: <https://my.axon.com/s/resources>.

Tools

The mounting kit includes:

- KlickFast mount
- 2x 3.65 mm screws to attach the KlickFast mount to the camera (Body 3 and Body Workforce require only one screw)
- Ampule of red LOCTITE 271

Optionally, an in-lbs torque wrench and T8 screwdriver will make installation easier.



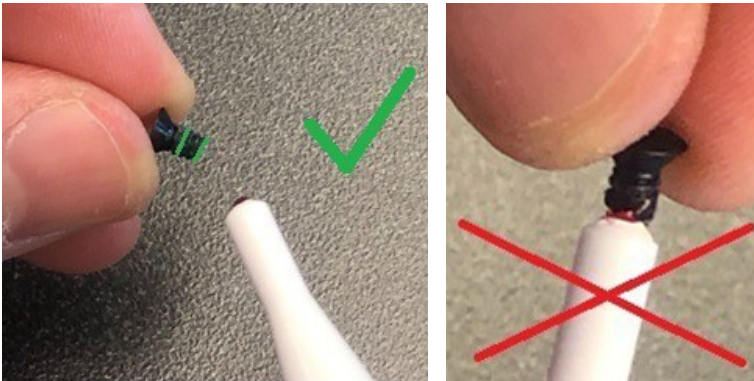
Installation

If you have questions about this process, contact Axon [technical support](#). Images show an Axon Body 3 camera.

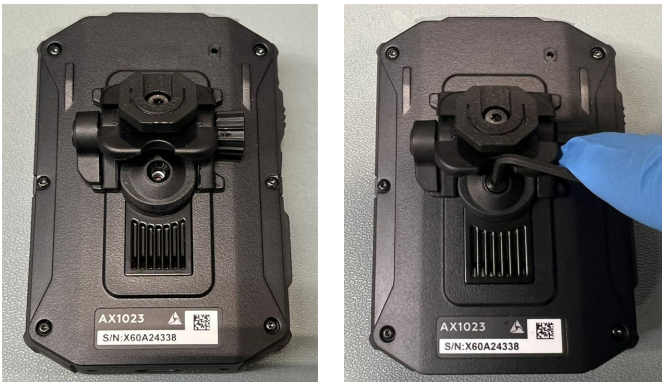
1. Clean any debris from the camera's back plate.
2. Rotate a swab with isopropyl alcohol inside the threads, then wait at least 30 seconds to allow residual alcohol to evaporate. Body 4 has two screw receptacles.



3. Apply one drop of red LOCTITE 271 to the lower half of the screw threads. Ensure it flows completely around the threads. Apply an additional drop as needed, but no more than two total. **DO NOT** apply to the bottom of the screw. The ampule in the kit provides about 20 drops.



4. Attach the KlickFast mount to the camera with the new screw(s). Ideally, use a torque driver with T8 bit and torque to 10 in-lbs. Otherwise, use the provided T8 L-handle tool to tighten the screw until it stops, then tighten a little bit more to snug it down. Do not over-tighten.



5. Let mount cure for 24 hours prior to use. Prior to this, **do not** test-fit onto a mounting base.

End of article